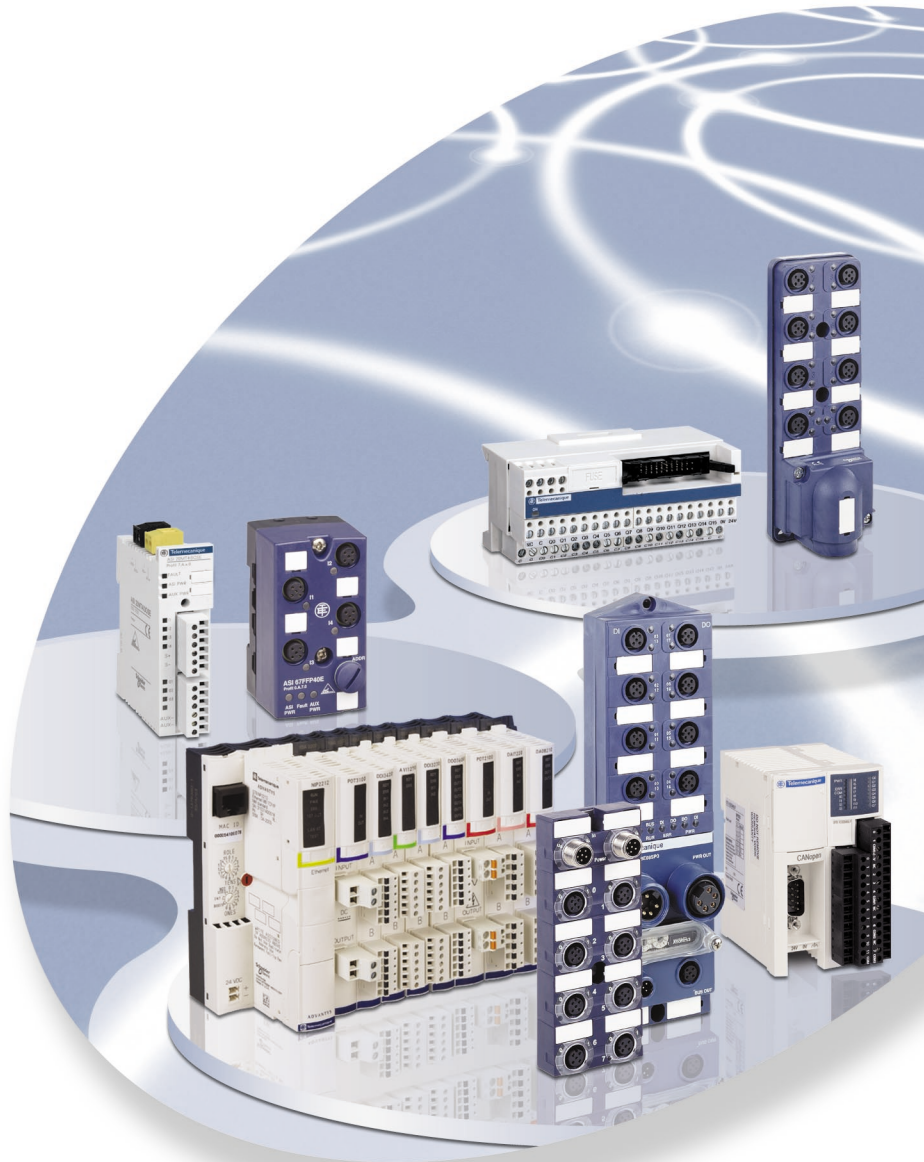


Interfaces & Inputs/Outputs

Advantys

A *solution* for each requirement



IP20 and IP67 Interfaces & Inputs/Outputs

Advantys

Simply Smart!

Leveraging
ingenuity
and intelligence
for **ease of use**

Advantys, a complete range of interfaces, inputs/outputs and system integration platforms for **all types of application**, from simple compact machines to the most complex!

From the simple pre-wired system to the I/O integration platform, from the monobloc product to the modular solution, from the heart of the enclosure to the heart of the machine... the Advantys range provides a solution whatever your requirements.

The aims of Advantys

- Simplified maintenance using on-board diagnostics, as close as possible to the sensors/actuators,
- Reduction of setting-up and commissioning times of installations,
- Reduction in size of enclosures,
- Reduction in cabling costs,
- Reduction in cabling errors,
- Assisting machine design,
- Simplification of machine architectures.

From *simplicity to openness*... the 3 Advantys solutions!

Advantys Telefast pre-wired system:

simplify your cabling by replacing long and difficult cable runs incorporating traditional terminals by Telefast sub-bases.

Advantys AS-Interface cabling system:

take the direct route for simplicity and security by connecting all the components of an automation system on the yellow cable.

Advantys distributed inputs/outputs:

simplify machine architectures by connecting the sensors and actuators distributed throughout your machines via a fieldbus.

23012107459785941561024165014945761231013204679456712310130264975424602310912
10106029451945555107912340410754912234041209745978594156102416501494576123101320467945671231013026497542460
2794579123404107549122340412097459785941561024165014945761231013204679456712310130264975424602310912
526409123404107549122340412097459785941561024165014945761231013204679456712310130264975424602310912
597123404107549122340412097459785941561024165014945761231013204679456712310130264975424602310912
1246120791234043056789101112131415161718192021222324252627282930313233343536373839404142434445464748495051525354555657585960616263646566676869707172737475767778798081828384858687888990919293949596979899100

Advantys range

in enclosure
IP 20

at the heart of processes or machines in
severe environments
IP67



Advantys Telefast ABE7



Advantys Telefast ABE9

Advantys Telefast pre-wired system



Advantys AS-Interface ASI20M



Advantys AS-Interface ASI67F

Advantys AS-Interface cabling system

Advantys distributed I/O



Advantys OTB



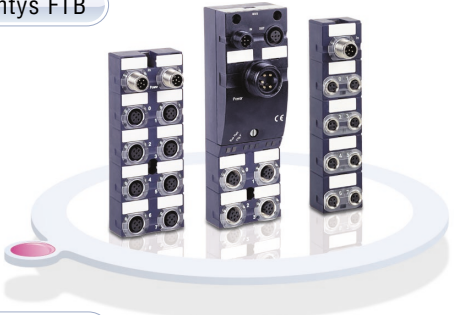
Advantys FTB

Optimised block



Advantys STB

Modular system



Advantys FTM

Discover the Advantys offer



Pre-wired interfaces

Advantys Telefast ABE7/ABE9

IP20 sub-bases

Advantys Telefast ABE7

The Advantys Telefast ABE7 pre-wired system enables connection and adaptation of control signals of industrial PLC cards that are fitted with HE10 connectors. It rationalises cabling by replacing PLC terminals and traditional terminal blocks... thus improving *simplicity* and *economy*.

- 3 types of sub-base: connection, adaptation and specialised,
- 2 alternative ranges: Optimum for a balance between cost and performance or Universal for extensive functions,
- 8, 12, or 16-channel sub-bases,
- 1, 2 or 3-wire connection,
- Signal status LED indicator,
- Adaptation to the signal power voltage,
- Sub-bases with soldered or plug-in relay,
- Solid-state or electromechanical technology,
- Distribution of polarity commons,
- Specialised sub-bases for analogue signals, counting, etc.
- Wide choice of accessories and replacement parts: prefabricated cables, additional terminal blocks, enclosure feedthroughs, etc.

Passive splitter boxes, IP67

Advantys Telefast ABE9

Advantys Telefast ABE9 splitter boxes eliminate long and difficult cable runs by avoiding the use of intermediate junction boxes. Due to their *modularity* and *size*, they are perfect for the requirements of your varying applications.

- M12 splitter boxes, 4 or 8-channel (2 signals/channel),
- Connection to the industrial PLC using splitter box cable or M23 connector,
- Signal status LED indicator,
- Fixings conforming to market standards,
- 24 V commons can be separated.



Simple, quick, reliable



Compact, robust.



Cabling system

Advantys AS-Interface



The Advantys AS-Interface interfaces (IP20 or IP67) enable connection to the yellow cable of any standard automation system component.

This cabling system offers:

- *Simplicity*... using a quick and expandable cabling system,
- *Maximum security*... AS-Interface significantly improves the reliability and safety of your machine,
- *Cost savings*... reduced design, installation, setting-up and commissioning times.



Compact, simple.

IP20 interfaces

Advantys AS-Interface ASI20M

- The most compact interfaces on the market: 25 mm wide for all the products,
- Simple mounting/removal using removable screw or spring connectors,
- Digital inputs for 2-wire, 3-wire or analogue sensors; relay, Triac 2 A, or transistor 0.5 A outputs,
- Up to 62 interfaces per master (V2.1),
- Wide choice of inputs/outputs.



Simple, robust.

IP67 interfaces

Advantys AS-Interface ASI67F

- 4 and 8-channel versions,
- Quick connection of sensors and actuators using M12 connectors,
- Compatibility assured with Telemecanique Osiris, Osiprox and Osiswitch product ranges,
- Quick and reliable connection to the AS-Interface cable by IDC (Insulation Displacement Connector) or M12 connector,
- Up to 62 interfaces per master (V2.1),
- Wide choice of inputs/outputs.



Distributed I/O

Optimised block

Optimum IP20 distributed Inputs/Outputs Advantys OTB

Designed for simple and compact machines, this solution is an optimised distributed input/output system that is both *simple* and *economical*. In addition, due to its compatibility with Twido expansion modules, there are several possibilities for creating *modular* islands.

- 3 communication base modules each with 20 I/O integrated,
- Expandable using 8 to 32-channel I/O modules (up to 264 channels),
- 24 V DC targeted range,
- Wide range of digital and analogue I/Os that are common to Twido programmable controllers,
- Sensor/actuator connections using removable screw terminals,
- Direct mounting on DIN rail,
- "Ideal" compactness: 20 I/O within a width of 55 mm, including the bus connection,
- Connectivity to fieldbus:

CANopen MODBUS Ethernet

IP67 monobloc I/O splitter boxes Advantys FTB

Compact and *flexible*, Advantys FTB splitter boxes allow connection of sensors and actuators at the heart of processes or machines in severe environments. The wide range of modules provides solutions to match your exact needs.

- 16 I, 8 I/8 O, 12 I/4 O and 16 configurable I/O modules (M12 connectors),
- Plastic or metal housing (for severe environments) versions,
- Diagnostic channel and integrated module,
- Compatibility with sensors and actuators with integrated diagnostics (DESINA),
- Can be integrated in the STB platform,
- Connectivity to fieldbus:

CANopen PROFINET DeviceNet INTERBUS



Economic, compact, open.



Compact, flexible.



Distributed I/O

Modular system

Integration and IP20 I/O platform Advantys STB

Flexible enough to provide the best suitability for almost any application, this *open* solution is, at the same time, an input/output platform, an integration system platform, a cabling solution and a power management system that is very *modular*.

- Modular and evolutionary design: up to 32 modules distributed over 15 metres,
- Programming software, accessories and mounting bases,
- Basic and standard (complex functions) offer, mixable within the same island,
- Intelligent system: hot swapping of I/O modules, automatic or software configuration, integrated diagnostics, remote or local real-time access, intelligent management of the life cycle of the system using Advantys configuration software,
- Simplified setting-up: separate supply for sensors and actuators and integrated protection,
- Plug-in modules (one module per base) on DIN mounting rail, removable spring or screw field wiring connectors,
- Removable memory card for quick and easy duplication,
- Direct connection to Schneider equipments (Magelis, TeSys and Tego Power starters, Altivar speed drives or I/O Advantys FTB) as well as many third party devices,
- Connectivity to fieldbus:

CANopen *Fipio* MODBUS *DeviceNet* **PROFIBUS** **INTERBUS** *Ethernet*

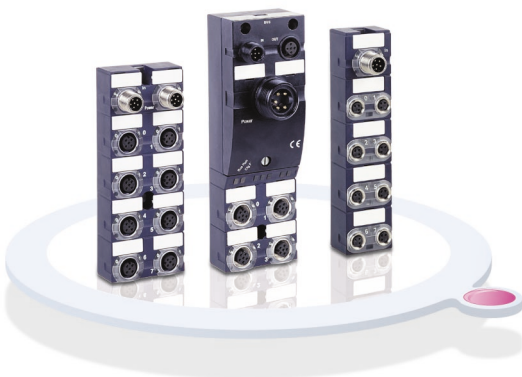
IP67 modular I/O splitter boxes Advantys FTM

Advantys FTM splitter boxes allow connection of sensors and actuators at the heart of processes or machines in severe environments. This *modular* offer enables, from a single communication interface, the connection of a *changeable* number of I/O splitter boxes. They are not governed by the type of fieldbus.

- M8 or M12 connector digital I/O modules (8 I, 16 I, 8 I/O, 16 I/O),
- M12 connector, voltage or current, analogue I/O modules (4 I or 4 O),
- Diagnostic channel and integrated module,
- Compatibility with sensors and actuators with integrated diagnostics (DESINA),
- Connectivity to fieldbus: **CANopen** **PROFIBUS** *DeviceNet*



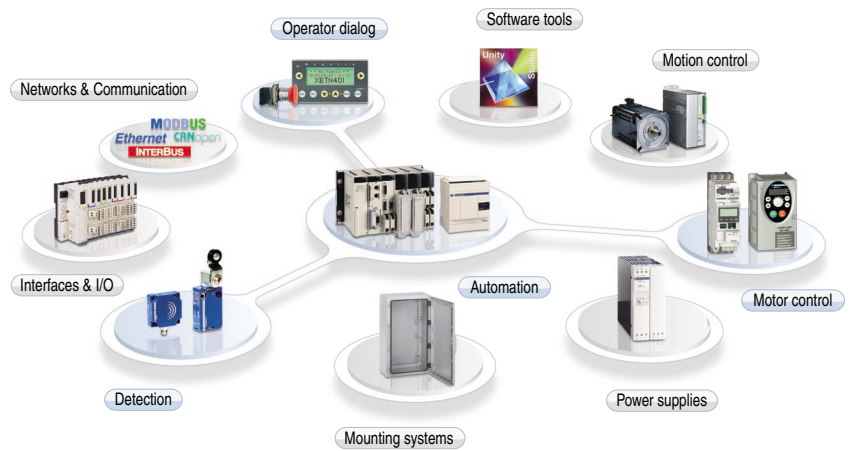
*Intelligent, modular,
flexible, open.*



Compact, modular, flexible.

The efficiency of Telemecanique branded *solutions*

Used in combination, Telemecanique products provide quality solutions, meeting all your **Automation & Control** applications requirements.



A worldwide presence

Constantly available

- More than 5 000 points of sale in 130 countries.
- You can be sure to find the range of products that are right for you and which complies fully with the standards in the country where they are used.

Technical assistance wherever you are

- Our technicians are at your disposal to assist you in finding the optimum solution for your particular needs.
- Schneider Electric provides you with all necessary technical assistance, throughout the world.



Schneider Electric Industries S.A.S.

Head Office
89, bd Franklin Roosevelt
94504 Reuil-Malmaison
FRANCE

www.schneider-electric.com
www.telemecanique.com

Owing to changes in standards and equipment, the characteristics given in the text and images in this document are not binding until they have been confirmed with us.

Design : www.blueloft.fr

Photos : Schneider Electric

Simply Smart!